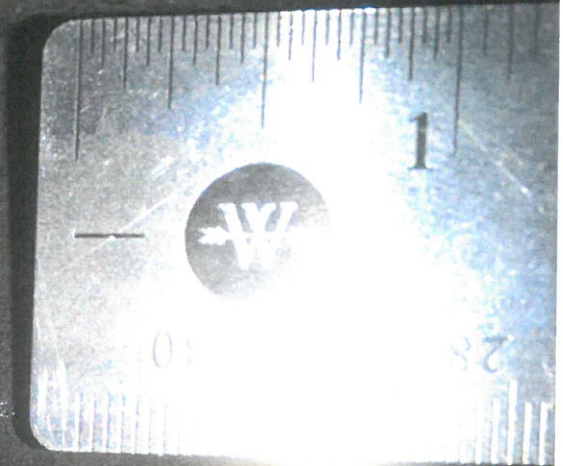
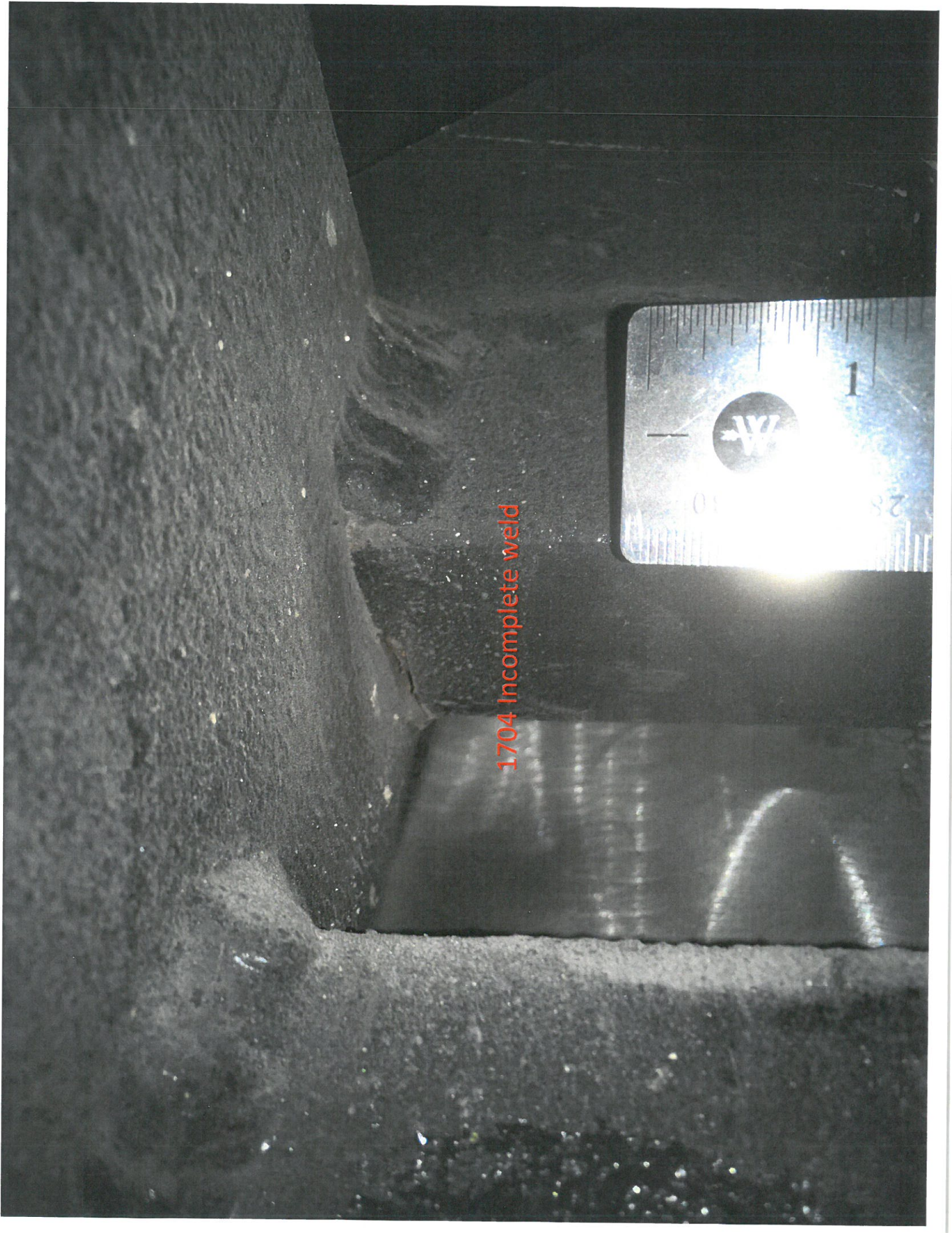


1704 questionable weld
on bridge plate



1704 Incomplete weld





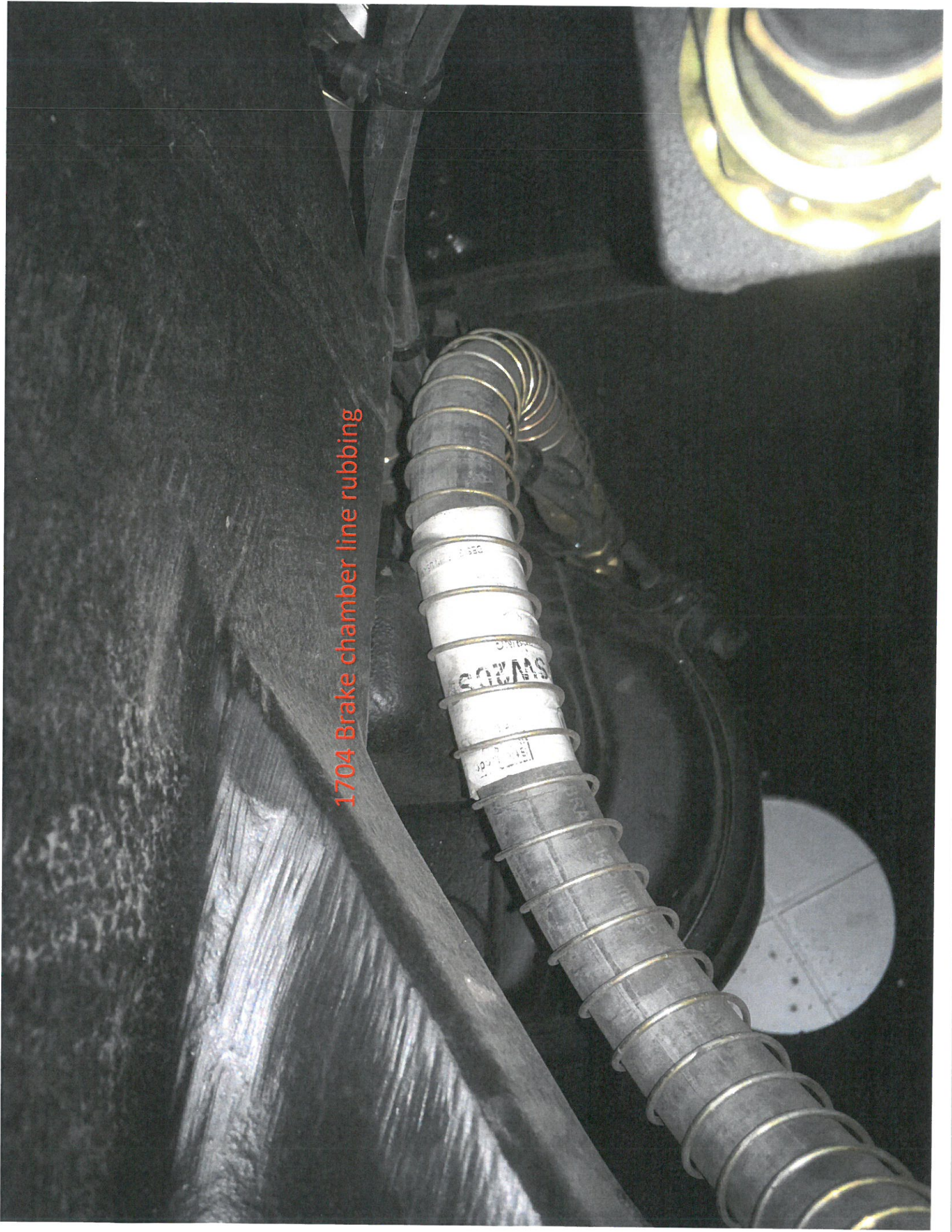
1704 Incomplete weld



1704 Incomplete weld



1704 Brake chamber line rubbing

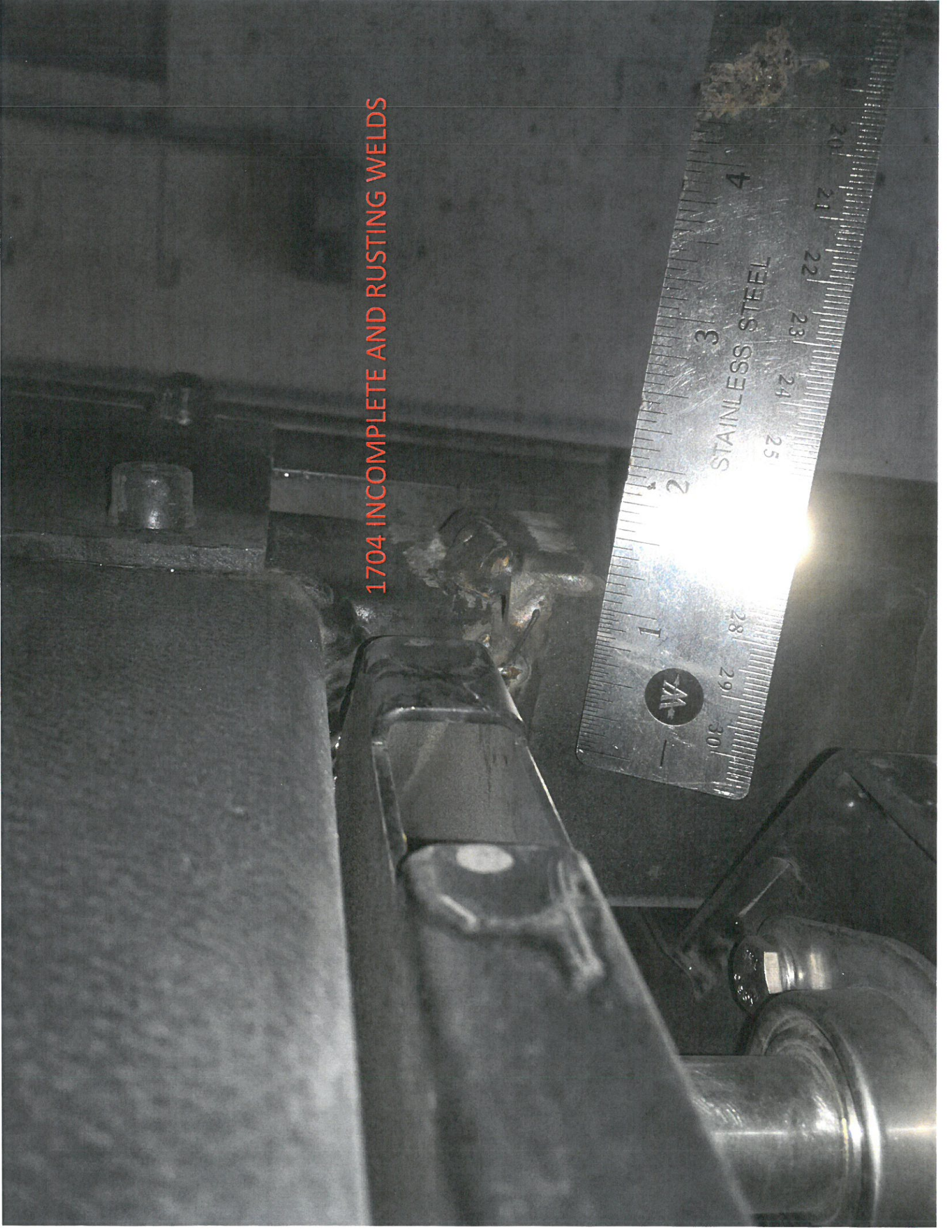




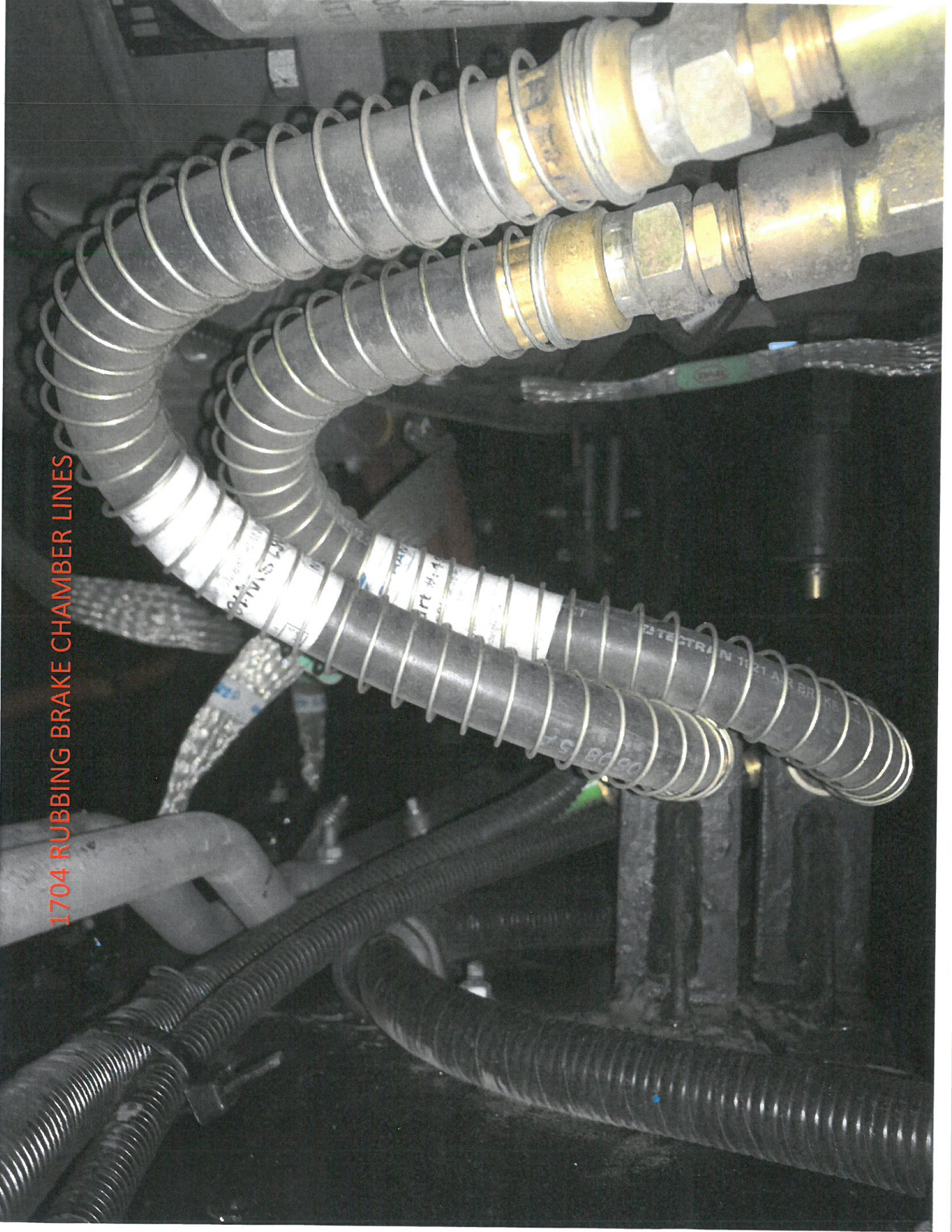
1704 Missing weld

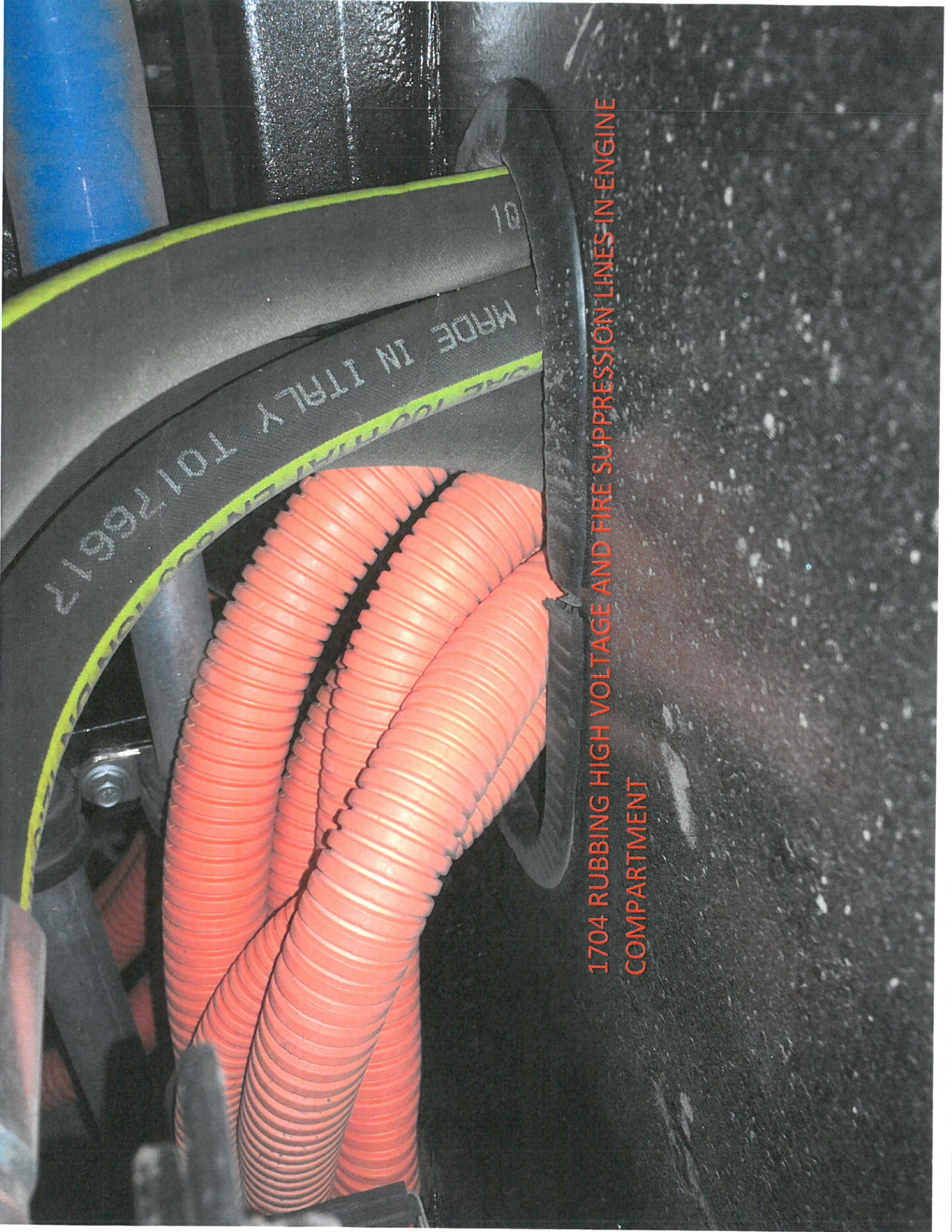


1704 INCOMPLETE AND RUSTING WELDS



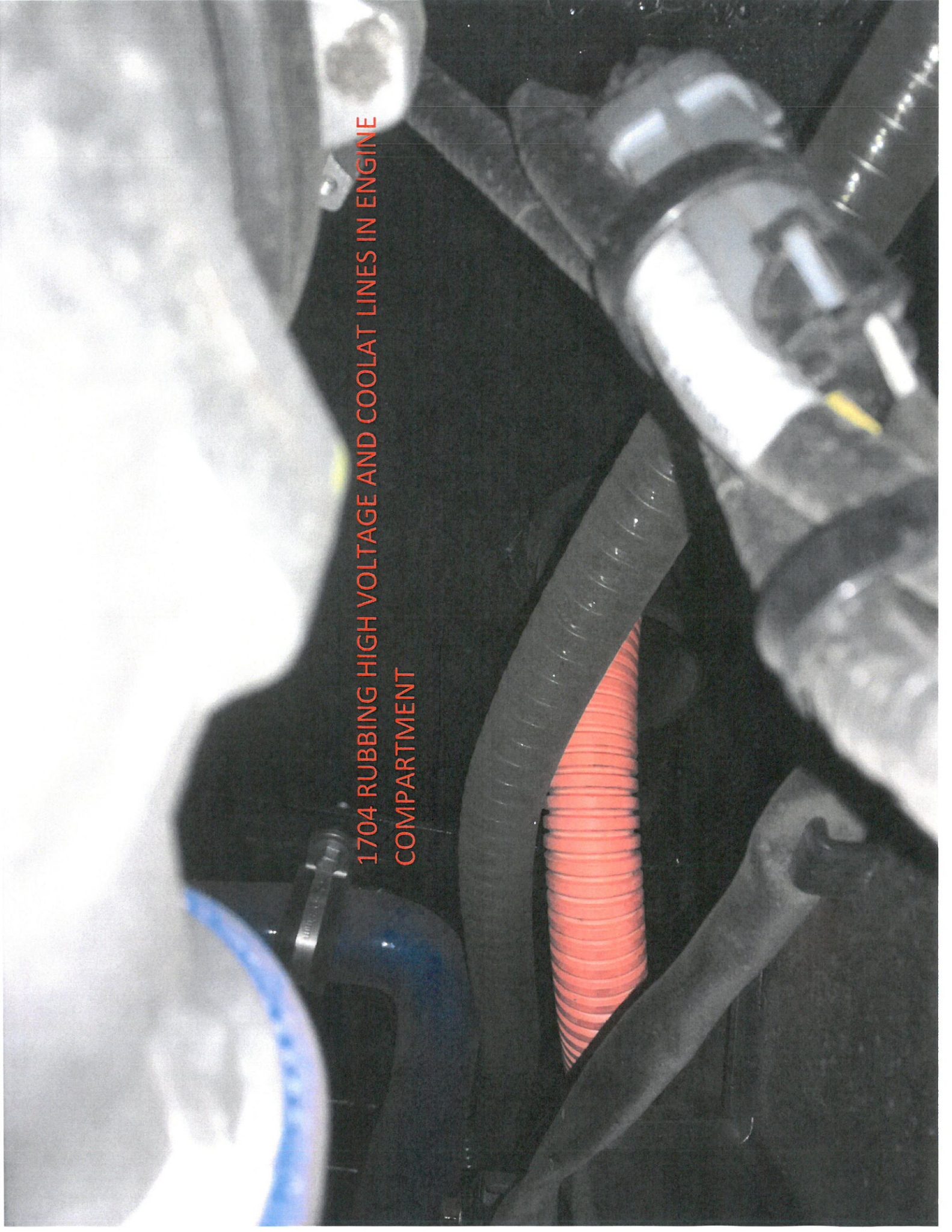
1704 RUBBING BRAKE CHAMBER LINES



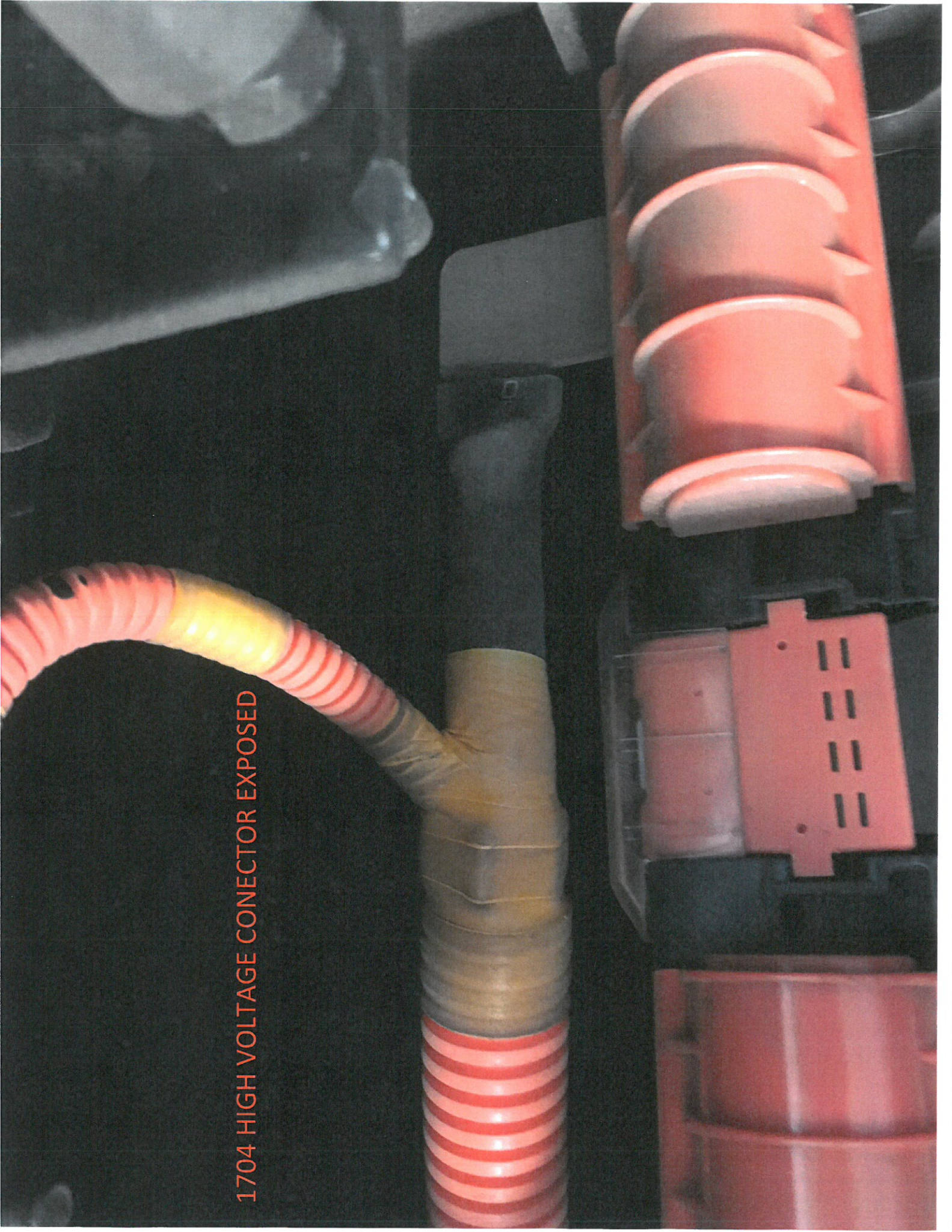


1704 RUBBING HIGH VOLTAGE AND FIRE SUPPRESSION LINES IN ENGINE COMPARTMENT

1704 RUBBING HIGH VOLTAGE AND COOLANT LINES IN ENGINE COMPARTMENT



1704 HIGH VOLTAGE CONECTOR EXPOSED

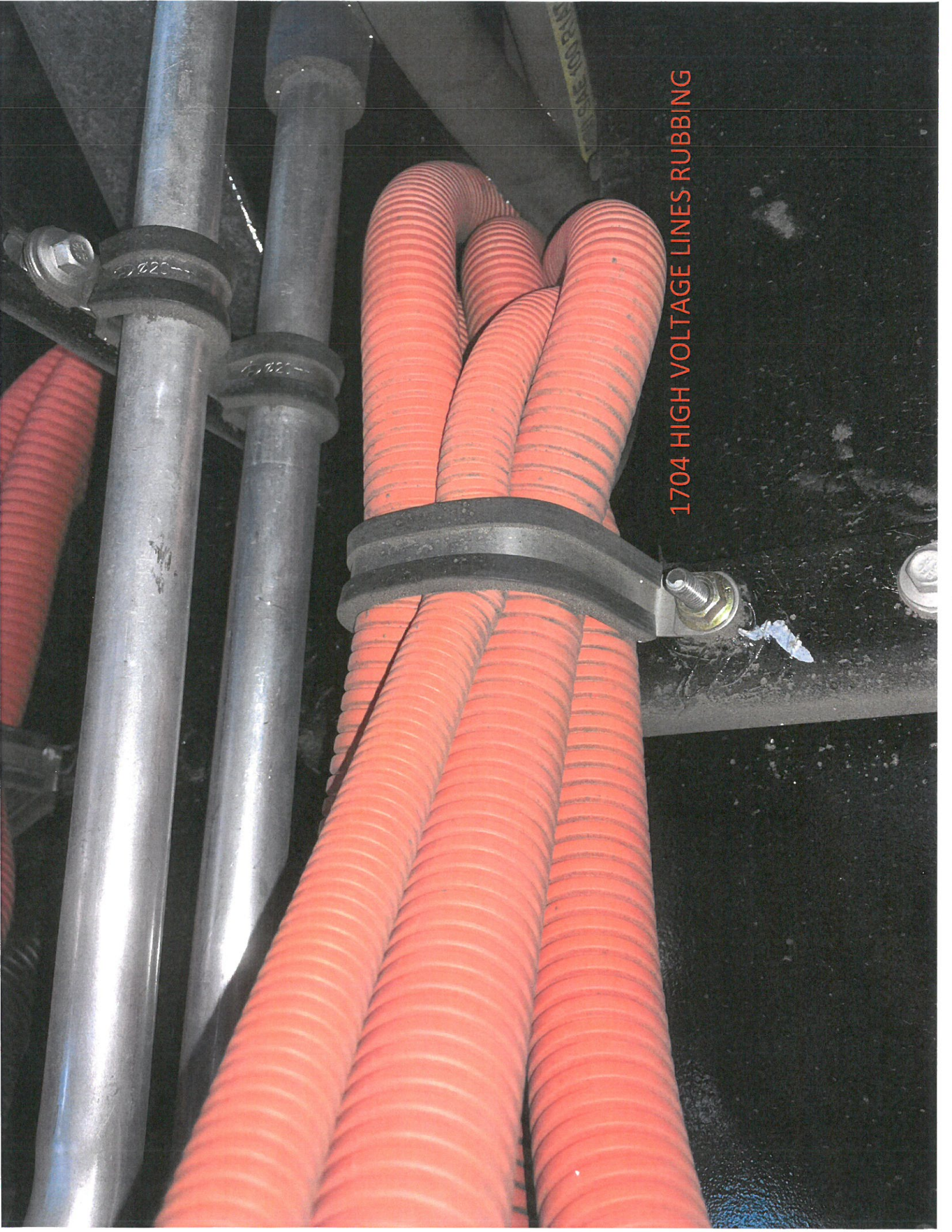




1704 FIRE SUPPRESSION LINE RUBBING ON FRAME

1704 HIGH VOLTAGE LINES RUBBING



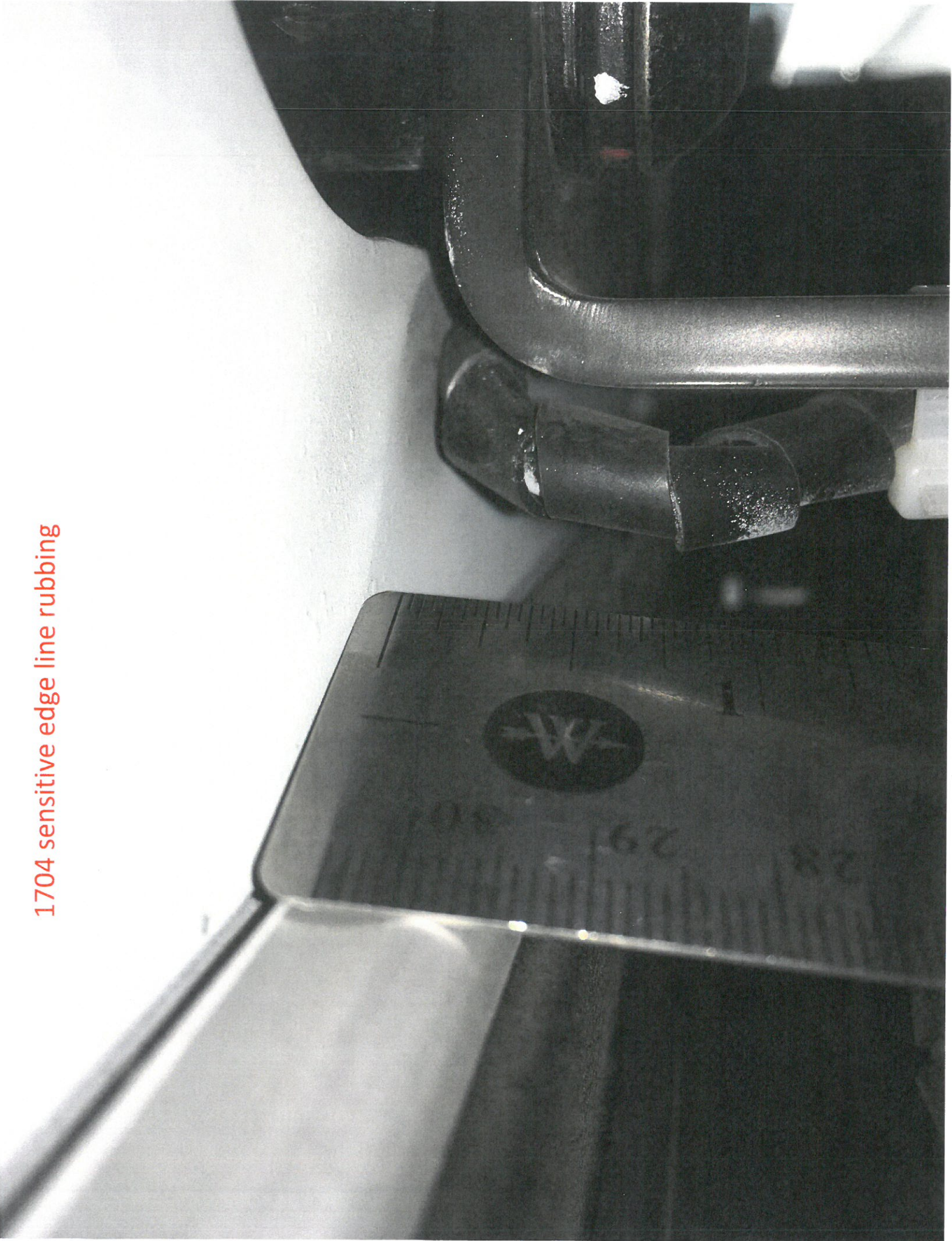


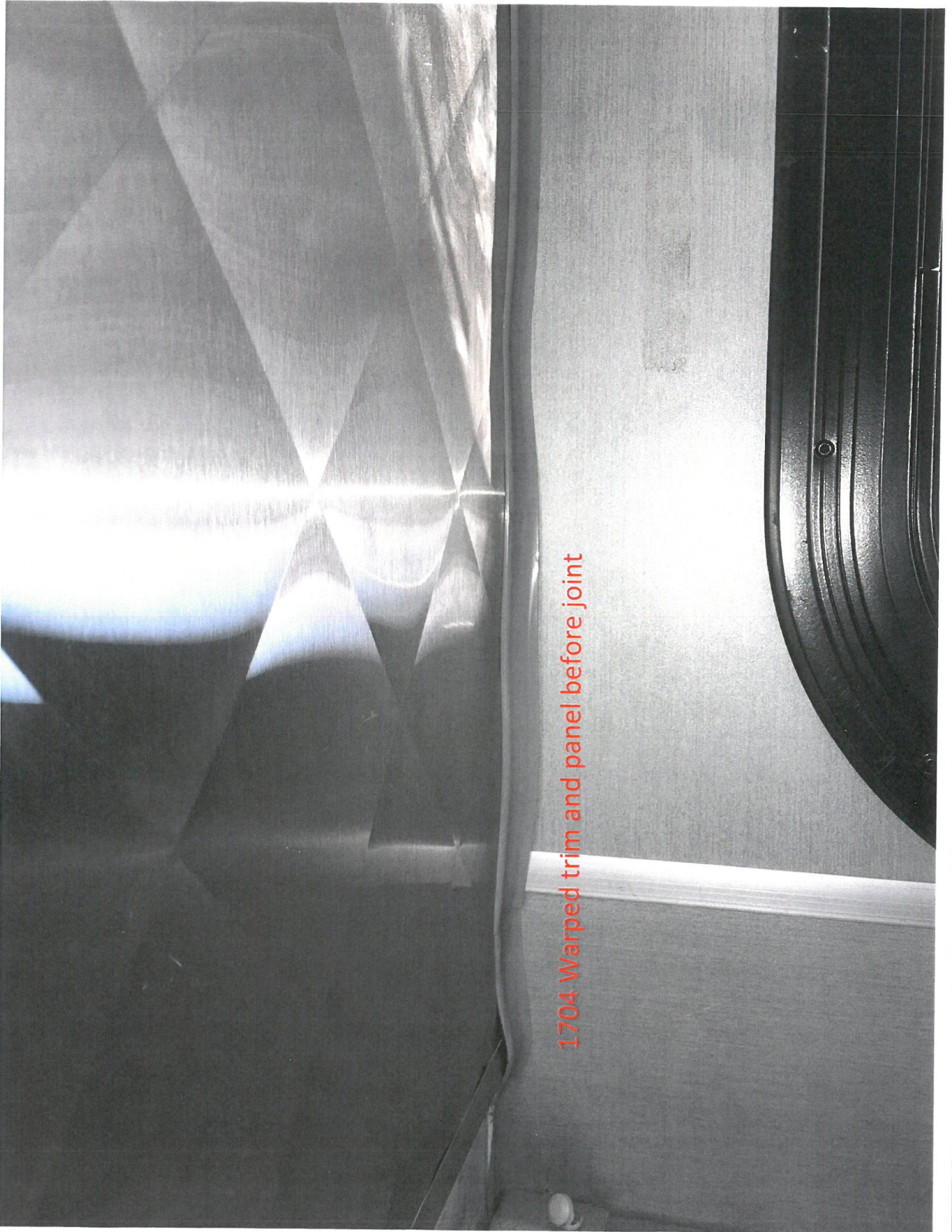
1704 HIGH VOLTAGE LINES RUBBING

A close-up photograph of a metal surface, likely an aircraft fuselage. The image shows a dark, curved section on the left and a lighter, flat section on the right. A vertical crack runs along the boundary between the two sections. Several rivets are visible along the top edge of the lighter section. The text '1704 craking sealant and possibly panel' is overlaid in red on the lower part of the image.

1704 craking sealant and possibly panel

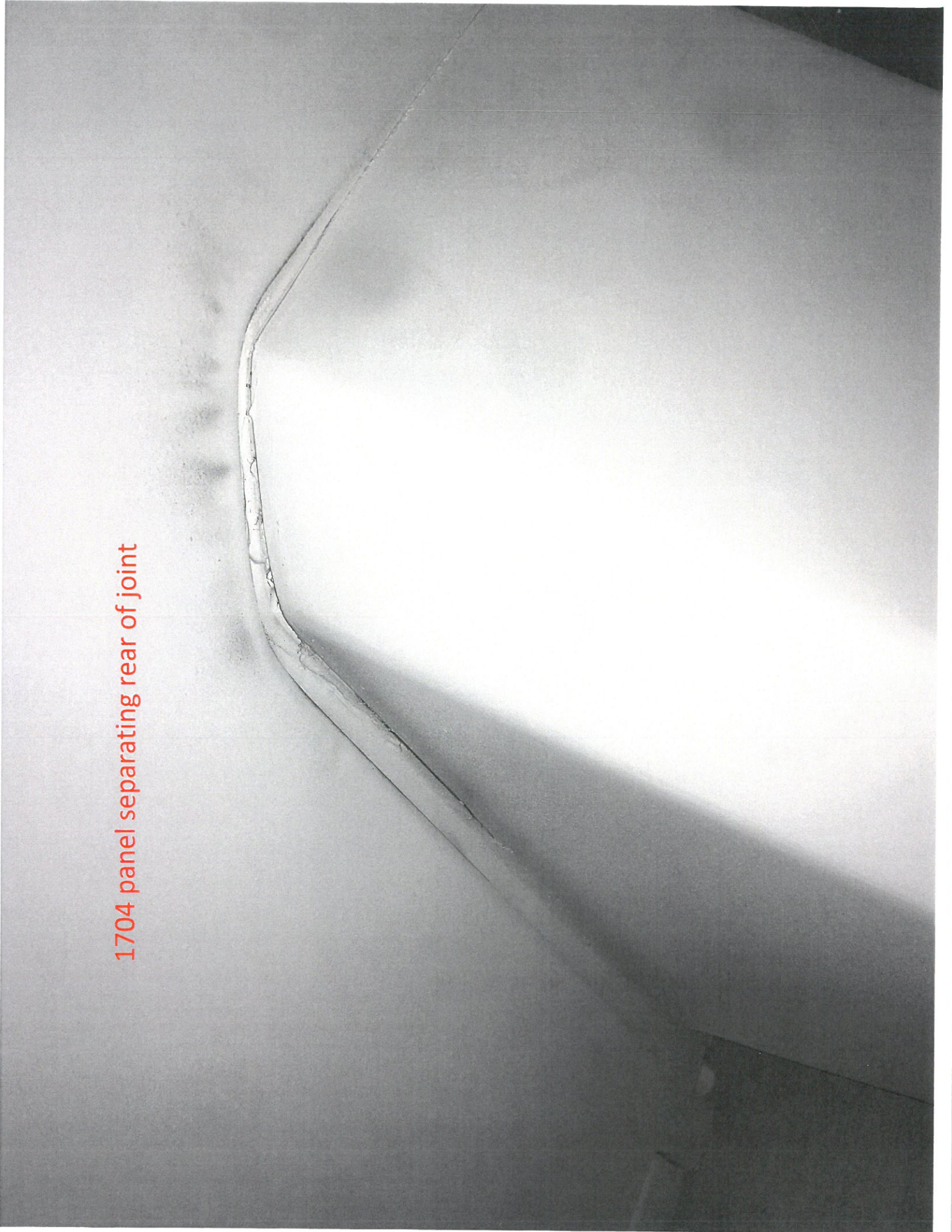
1704 sensitive edge line rubbing





1704 Warped trim and panel before joint

1704 panel separating rear of joint



1704 poor adhesion



1704 Sensitive edge line
broken



1704 limited foot space left side behind rear door





1704

ART

1704 lines and cables exposed to road hazards



1704 jack point has questionable integrity

